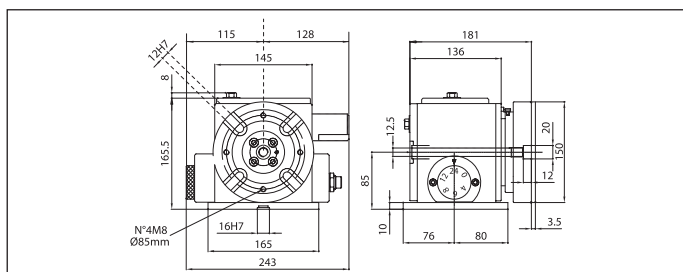


# Serie THS 150


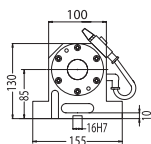
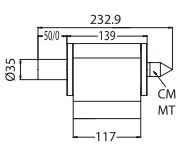

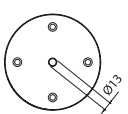
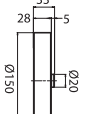
**TAVOLE PNEUMATICHE Ø 150 A DIVISIONI FISSE (4-6-8-12-24)**  
**PNEUMATIC TABLES Ø 150 FOR FIXED INDEXING (4-6-8-12-24)**  
**PNEUMATISCHE DREHTISCHE Ø 150 FÜR FIXTEILUNGEN (4-6-8-12-24)**



DESCRIZIONE DESCRIPTION	SERIE SERIES	CODICE CODE
<b>TAVOLA HIRTH Ø 150 ALTEZZA PUNTE mm 85</b> TABLE Ø 150 HEIGHT POINT mm 85 DREHTISCH Ø 150 SPITZENHÖHE mm 85	THS150	THS150.000.03
<b>START MANUALE (incluso)</b> MANUAL START (included) HANDANSTO (einschließlich)	—	—
<b>START AUTOMATICO PER FUNZIONE M (quadro elettrico)</b> AUTOMATIC START FOR M FUNCTION (electrical box) AUTOMATISCHE STARTER FÜR M FUNKTION	SAU1	TPS000.001.02

**NB: AGGIUNGERE AI PREZZI DELLE TAVOLE IL COSTO DI INSTALLAZIONE + CORSO PROGRAMMAZIONE PRESENTI NELLA TABELLE (PAG. 06 / 56)**

## ACCESSORI PER TAVOLE THS 150 OPTIONAL FOR TABLE THS 150 / OPTIONAL FÜR DREHTISCH TYP THS 150

	DESCRIZIONE DESCRIPTION	SERIE SERIES	CODICE CODE
  	<b>CONTROPUNTA PNEUMATICA</b> <b>ALTEZZA PUNTA mm 85</b> PNEUMATIC TAILSTOCK HEIGHT POINT mm 85 PNEUMATISCHE REITSTOCK SPITZENHÖHE mm 85	CPP150	CPP150.000.01
  	<b>PLATORELLO Ø 150</b> DIAL Ø 150 FUTTERFLANSCH Ø 150	PD150	PD150.000.01



**AUTOCENTRANTI**  
CHUCK WELL  
SPANNFUTTER



**CHIUDIPINZA**  
CLOSE-COLLECTS WELL  
SPANNZANGENSCHLIEBER



**CULLE (Vedere a pag. 06 / 54)**  
CRADLE (See page 06 / 54)  
SCHWENKUORRICHTUNG (Preis sehen Sie auf Seite 06 / 54)

**NB: RICHIEDERE PREZZI A NS. UFF. VENDITE - PLEASE: ASK FOR A QUOTATION - BITTE: PREIS AUF FRAGE**

## IN DOTAZIONE / INCLUDED / EINSCHLIEßLICH



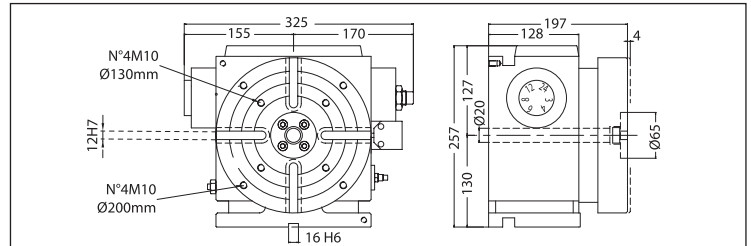
T18.000.001  
**TASSELLI DI GUIDA x Cava a T 18H7**  
GUIDE BLOCK FOR T 18H7 SLOT  
EINRICHTUNG EINSATLSTÜCK FÜR T 18H7



STAF00.000.07  
**KIT STAFFE H mm 10**  
KIT CLAMPS H mm 10  
KIT SPANNEISEN H mm 10

# Serie THS-TPS 220

**TAVOLE PNEUMATICHE Ø 220 A DIVISIONI FISSE (3-4-6-8-12-24)**  
**PNEUMATIC TABLES Ø 220 FOR FIXED INDEXING (3-4-6-8-12-24)**  
**PNEUMATISCHE DREHTISCHE Ø 220 FÜR FIXTEILUNGEN (3-4-6-8-12-24)**



DESCRIZIONE DESCRIPTION	SERIE SERIES	CODICE CODE
TAVOLA Ø 220 ALTEZZA PUNTE mm 130 / TABLE Ø 220 HEIGHT POINT mm 130 DREHTISCH Ø 220 SPITZENHÖHE mm 130	TPS220	TPS220.000.01
TAVOLA HIRTH Ø 220 ALTEZZA PUNTE mm 130 / TABLE Ø 220 HEIGHT POINT mm 130 DREHTISCH Ø 220 SPITZENHÖHE mm 130 / TABLE Ø 220 HAUTEUR POINTE mm 130	THS220	THS220.000.02
START MANUALE (pulsante o pedaliera pneumatica) / MANUAL START (with button or kick starter) HANDANSTO (mit Knopf oder Pedal)	SMA1	TPS000.001.01
START AUTOMATICO PER FUNZIONE M (quadro elettrico) / AUTOMATIC START FOR M FUNCTION (electrical box) AUTOMATISCHE STARTER FÜR M FUNKTION	SAU1	TPS000.001.02

**NB: AGGIUNGERE AI PREZZI DELLE TAVOLE IL COSTO DI INSTALLAZIONE + CORSO PROGRAMMAZIONE PRESENTI NELLA TABELLE (PAG. 06 / 56)**

## ACCESSORI PER TAVOLE TPS-THS 220

OPTIONAL FOR TABLE TYPE TPS-THS 220 / OPTIONAL FÜR DREHTISCH TYP TPS-THS 220

		DESCRIZIONE DESCRIPTION	SERIE SERIES	CODICE CODE
		<b>CONTROPUNTA IDROPNEUMATICA</b> ALTEZZA PUNTA mm 130 HYDROPNEUMATIC TAILSTOCK HEIGHT POINT mm 130 HYDROPNEUMATISCHE REITSTOCK SPITZENHÖHE mm 130	CPP220	CPP220.000.01
		<b>PLATORELLO Ø 220</b> DIAL Ø 220 FUTTERFLANSCH Ø 220	PD220	PD220.000.01



**AUTOCENTRANTI**  
CHUCK WELL  
SPANNFUTTER



**CHIUDIPINZA**  
CLOSE-COLLECTS WELL  
SPANNZANGENSCHLIEBER



**CULLE (Vedere a pag. 06 / 54)**  
CRADLE (See page 06 / 54)  
SCHWENKUORRICHTUNG  
(Preis sehen Sie auf Seite 06 / 54)

**NB: RICHIEDERE PREZZI A NS. UFF. VENDITE - PLEASE: ASK FOR A QUOTATION - BITTE: PREIS AUF FRAGE**

## IN DOTAZIONE / INCLUDED / EINSCHLIEßLICH



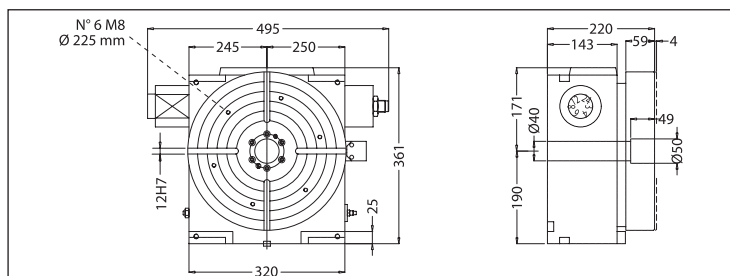
T18.000.001  
TASSELLI DI GUIDA x Cava a T 18H7  
GUIDE BLOCK FOR T 18H7 SLOT  
EINRICHTUNG EINSATLSTÜCK FÜR T 18H7



STAF00.000.08  
KIT STAFFE H mm 20 / KIT CLAMPS H mm 20  
KIT SPANNEISEN H mm 20

# Serie THS-TPS 320

**TAVOLE PNEUMATICHE Ø 320 A DIVISIONI FISSE (3-4-6-8-12-24)**  
**PNEUMATIC TABLES Ø 320 FOR FIXED INDEXING (3-4-6-8-12-24)**  
**PNEUMATISCHE DREHTISCHE Ø 320 FÜR FIXTEILUNGEN (3-4-6-8-12-24)**



DESCRIZIONE DESCRIPTION	SERIE SERIES	CODICE CODE
TAVOLA Ø 320 ALTEZZA PUNTE mm 190 START MANUALE GIA' INCLUSO / TABLE Ø 320 HEIGHT POINT mm 190 DREHTISCH Ø 320 SPITZENHÖHE mm 190	TPS320	TPS320.000.01
TAVOLA HIRTH Ø 320 ALTEZZA PUNTE mm 190 START MANUALE GIA' INCLUSO / TABLE Ø 320 HEIGHT POINT mm 190 DREHTISCH Ø 320 SPITZENHÖHE mm 190	THS320	THS320.000.02
START MANUALE (pulsante o pedaliera pneumatica) / MANUAL START (with button or kick starter) HANDANSTO (mit Knopf oder Pedal)	SMA1	TPS000.001.01
START AUTOMATICO PER FUNZIONE M (quadro elettrico) / AUTOMATIC START FOR M FUNCTION (electrical box) AUTOMATISCHE STARTER FÜR M FUNKTION	SAU1	TPS000.001.02

**NB: AGGIUNGERE AI PREZZI DELLE TAVOLE IL COSTO DI INSTALLAZIONE + CORSO PROGRAMMAZIONE PRESENTI NELLA TABELLE (PAG. 06 / 56)**

## ACCESSORI PER TAVOLE TPS-THS-320

OPTIONAL FOR TABLE TYPE TPS-THS 320 / OPTIONAL FÜR DREHTISCH TYP TPS-THS 320 / ACCESSOIRES POUR TABLES GENRE TPS-THS 320

	DESCRIZIONE DESCRIPTION	SERIE SERIES	CODICE CODE
	<b>CONTROPUNTA IDROPNEUMATICA</b> <b>ALTEZZA PUNTA mm 190</b> HYDROPNEUMATIC TAILSTOCK HEIGHT POINT mm 190 HYDROPNEUMATISCHE REITSTOCK SPITZENHÖHE mm 190	CPP320	CPP320.000.01
	<b>PLATORELLO Ø 320</b> DIAL Ø 320 FUTTERFLANSCH Ø 320	PD320	PD320.000.01



**AUTOCENTRANTI**  
CHUCK WELL  
SPANNFUTTER



**CHIUDIPINZA**  
CLOSE-COLLECTS WELL  
SPANNZANGENSCHLIEBER



**CULLE (Vedere a pag. 06 / 54)**  
CRADLE (See page 06 / 54)  
SCHWENKUORRICHTUNG  
(Preis sehen Sie auf Seite 06 / 54)

**NB: RICHIEDERE PREZZI A NS. UFF. VENDITE - PLEASE: ASK FOR A QUOTATION - BITTE: PREIS AUF FRAGE**

## IN DOTAZIONE / INCLUDED / EINSCHLIEßLICH



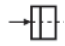





T18.000.001  
**TASSELLI DI GUIDA x Cava a T 18H7**  
GUIDE BLOCK FOR T 18H7 SLOT  
EINRICHTUNG EINSATLSTÜCK FÜR T 18H7



STAF00.000.01  
**KIT STAFFE H mm 25 / KIT CLAMPS H mm 25**  
KIT SPANNEISEN H mm 25

# Serie THS-TPS

## DATI TECNICI TAVOLE PNEUMATICHE PNEUMATIC TABLES TECHNICAL DATA TECHNISCHEN DATEN DER PNEUMATISCHE DREHTISCHE

CARATTERISTICHE TECHNICAL DATA / TECHNISCHE DATEN		THS 150	TPS 220 Perni/Pins	THS 220 Hirth	TPS 320 Perni/Pins	THS 320 Hirth
<b>Diametro tavola</b> Plate diameter/Tischdurchmesser		mm.	150	220	220	325
<b>Precisione angolare sul diametro tavola</b> Indexing accuracy on plate diameter Teilgenauigkeit Bei Tischdurchmesser		Sec.	+/- 5	+/- 10	+/- 5	+/- 10
<b>Planarità tavola</b> Table flatness/Tischebenheit		mm.	0,02			
<b>Precisione centraggio</b> Center accuracy /Zentriergenauigkeit		mm.	0,02			
<b>Pressione di esercizio</b> Inlet pressure/Betriebsdruck		Bar	6-8			
<b>Forza di staffaggio</b> Plate clamping/Spannkraft		N	3000 (6 Bar)	4500 (6 Bar)	15000 (6 Bar)	
<b>Coppia in rotazione</b> Rotation torque/Drehmoment		Nm	18	25	80	
<b>N° Divisione</b> <b>Tempi d'indexaggio</b> Indexing time/Schaltzeiten	14	15°	Sec. 0,7	Sec. 0,8	Sec. 0,8	
	12	30°	Sec. 0,7	Sec. 0,8	Sec. 0,8	
	8	45°	Sec. 0,8	Sec. 0,8	Sec. 1,0	
	6	60°	Sec. 0,9	Sec. 1,1	Sec. 1,1	
	4	90°	Sec. 0,9	Sec. 1,0	Sec. 1,5	
	3	120°	Sec. 1,2	Sec. 1,2	Sec. 1,8	
<b>Peso /Weight / Gewicht</b>		Kg.	20	38	78	83
<b>FORZE DI LAVORO</b> WORKING FORCE/BEARBEITUNGSKRAFT						
<b>Max spinta assiale</b> Axial working force/Max Axialdruck		 N	9000	15000	25000	
<b>Max forza tangenziale</b> Max torque force/Max Tangentialkraft		 Nm	380	250	500	600
<b>Max coppia ribaltante</b> Max tilting moment/Kippmoment		 Nm	200	15000	25000	
<b>CARICHI MAX TRASPORTABILI</b> MAX CARRIED LOAD/MAX TRANSPORTLAST						
<b>Ad asse orizzontale</b> With horizontal axis/Horizontalachse		 N Nm	180 40	400 80	1500 200	
<b>Ad asse verticale</b> With vertical axis/Vertikalachse		 N	400	800	1300 1500	
<b>Carico sbilanciato</b> Unbalancing load/Außer mittige Last		 Nm	5	20	80	
<b>Momento d'inerzia max</b> Max inertia moment/Max Trägheitsmoment		Nm²	8	12	200	