

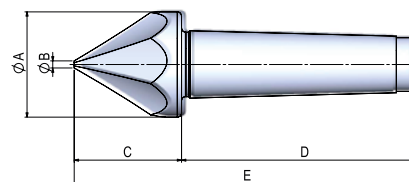
SERIE STTF/STTI

Trascinatore fisso/con testina intercambiabile per tubi
 Face driver for tubes/Interchangeable face driver



TRASCINATORE PER TUBI - SERIE STTF / Face driver for tubes - SERIES STTF

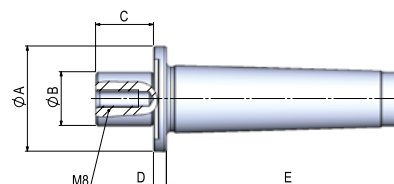
SERIE / Series	DIMENSIONI / Dimensions (mm)					PESO / Weight (kg)	CODICE / Code
	øA	øB	CD		E		
STTF C.M.2 STTF Morse Taper 2	48	85	06	91	19	0,5	STTF002.000
STTF C.M.3 STTF Morse Taper 3	48	85	08	61	36	0,7	STTF003.000
STTF C.M.4 STTF Morse Taper 4	48	85	01	09	1591		STTF004.000
STTF C.M.5 STTF Morse Taper 5	48	85	01	36	1861	,9	STTF005.000
STTF ø30x50 STTF ø30x50	48	85	0ø	30x50	00	0,8	STTF006.000



TRASCINATORE PER TUBI - SERIE STTI / Face driver for tubes - SERIES STTI

Trascinatore con testina intercambiabile / Interchangeable face driver

SERIE / Series	DIMENSIONI / Dimensions (mm)					PESO / Weight (Kg)	CODICE / Code
	øA	øB	CD		E		
STTI C.M.3 STTI Morse Taper 3	49	25	27	68	60	,5	STTI1003.000
STTI C.M.4 STTI Morse Taper 4	49	25	27	61	09	0,7	STTI1004.000
STTI C.M.5 STTI Morse Taper 5	49	25	27	61	36	1,6	STTI1005.000
STTI C.M.6 STTI Morse Taper 6	49	25	27	61	90	2,3	STTI1006.000
STTI ø30x50 STTI ø30x50	49	25	27	6	50	0,5	STTI1000.000



TESTINE IN HSS PER TRASCINATORE STTI / HSS head for face driver STTI

SERIE / Series	DIMENSIONI / Dimensions (mm)			CODICE / Code
	øA	øB	C	
TTTI ø18	68	22	50	TTTI018.068
TTTI ø63	113	67	50	TTTI063.113
TTTI ø108	158	111	50	TTTI108.158
TTTI ø150	200	154	50	TTTI150.200
TTTI ø195	245	199	50	TTTI195.245

