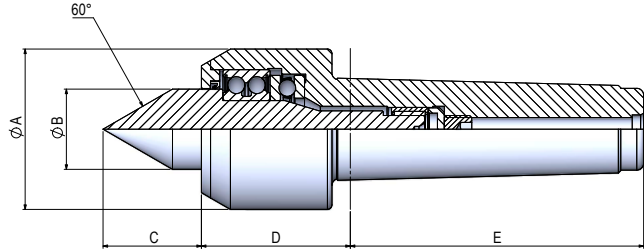


## SERIE SP

Contropunta ad alta velocità senza ghiera di estrazione  
 High speed live center without ring nut

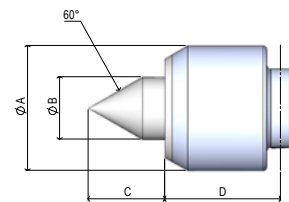


### CARATTERISTICHE GENERALI / Technical data

CONO MORSE / Morse Taper	PESO / Weight (kg)	CARICO / Load		ECCENTRICITA' / Eccentricity	MAX GIRI / 1' / Max Rounds / 1' r.p.m.
		ASSIALE Axial (N)	RADIALE Radial (N)		
C.M.2	0,5	1650	610	0,005	6500
C.M.3	0,6	2110	630	0,005	6000
C.M.4	1,1	3040	1490	0,005	4500
C.M.5	1,9	3730	1750	0,005	4000

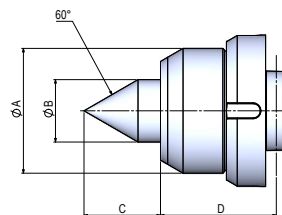
### SERIE SP con cuspidi standard / Series SP with standard point

CONO MORSE / Morse Taper	DIMENSIONI / Dimensions (mm)					SERIE / Series	CODICE / Code
	$\phi A$	$\phi B$	$\phi C$	D	E		
C.M.2	42	20	25	48	64	SP 2	SP002.000.01
C.M.3	42	20	25	48	81	SP 3	SP003.000.01
C.M.4	60	28	34	61,5	102,5	SP 4	SP004.000.01
C.M.5	70	35	43	63,5	129,5	SP 5	SP005.000.01



### SERIE SP-G Ghiera di estrazione / Series SP-G Ring nut

CONO MORSE / Morse Taper	DIMENSIONI / Dimensions (mm)						SERIE / Series	CODICE / Code
	$\phi A$	$\phi B$	C	D	E	$\phi Z$		
C.M.4	60	28	34	61,5	102,5	75	SP/G 4	SP004.000.08
C.M.5	70	35	43	63,5	129,5	82	SP/G 5	SP005.000.08



# SERIE SP

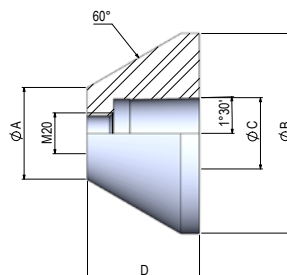
Contropunta ad alta velocità senza ghiera di estrazione  
 High speed live center without ring nut

## RICAMBI E ACCESSORI/ Spare parts and extra items

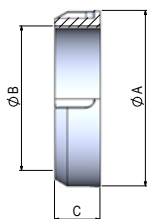
### FLANGE PER CONTROPUNTA / Flange for live center

SERIE / Series	DIMENSIONI / Dimensions (mm)				CODICE / Code
	øA	øB	øC	D	
FPI/45/98	45	98	35	55	RPW000.001.05
FPI/95/148	95	148	35	55	RPW000.002.05
FPI/145/198	145	198	35	55	RPW000.003.05
FPI/195/248	195	248	35	55	RPW000.004.05
FPI/245/298	245	298	35	55	RPW000.005.05

øB a richiesta fino a ø1000 /  
 øB on request till ø1000

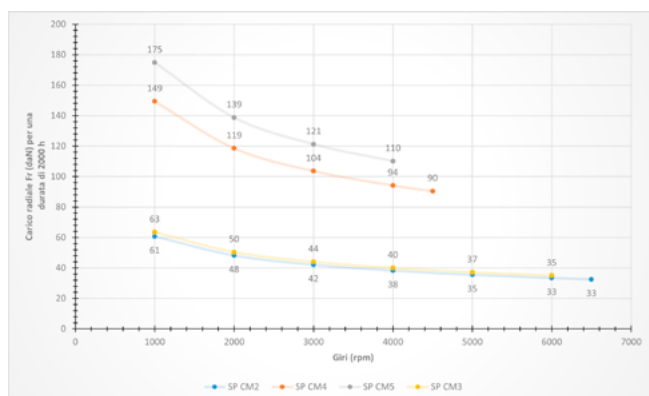


### GHIERA DI ESTRAZIONE PER SERIE POWER / SP-G / MA Ring nut for SERIES POWER / SP-G / MA



CONO MORSE / Morse Taper	DIMENSIONI / Dimensions (mm)			SERIE / Series	CODICE / Code
	øA	øB	C		
3	75	60x1,5	22	GHP 60	RPW003.005.00
4	82	70x1,5	22	GHP 70	RPW004.005.00
5	105	90x1,5	20	GHP 90	RPW005.005.00
6	140	110x1,5	23	GHP 110	RPW006.005.00

### Grafico carico assiale SP SERIES SP assial graph



### Grafico carico radiale SP SERIES SP radial graph

