

## SERIE SP-CD

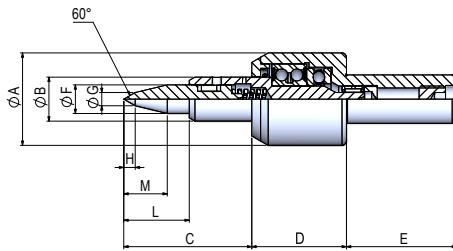
Contropunta con sistema a carico differenziato  
 Live center with differential load



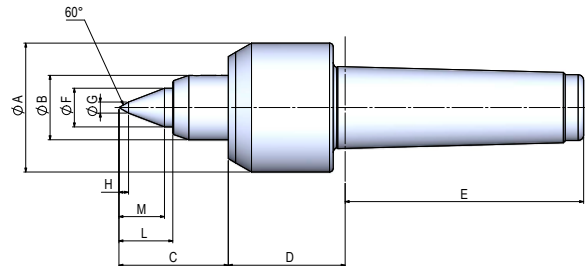
### SERIE SP-CD con cuspidi standard / SERIES SP-CD with standard point

SERIE / Series	DIMENSIONI / Dimensions (mm)									
	øA	D	E	øB	øF	øG	H	M	L	C
C.M.3 / ø 22	42	48	81	20	13	6	5,2	19,7	25,3	53,3
C.M.4 / ø 28	60	61,5	102,5	28	16	6	5,2	19,7	26,6	54
C.M.5 / ø 32	70	63,5	129,5	35	21	6	5,2	24,4	28,9	59,6
C.I.L.3 / ø 22	42	43	50	20	13	6	5,2	19,7	25,3	53,3
C.I.L.4 / ø 28	60	55	50	28	16	6	5,2	19,7	26,6	54
C.I.L.5 / ø 32	70	57	60	35	21	6	5,2	24,4	28,9	59,6

VERSIONE C.I.L.



VERSIONE C.M.



### CARATTERISTICHE GENERALI SERIE SP-CD con cuspidi standard / Technical data SERIES SP-CD with standard point

CONO MORSE / Morse Taper	PESO / Weight (Kg)	CARICO / Load		ECCENTRICITA' / Eccentricity	MAX GIRI / 1' Max Rounds / 1' r.p.m.	MAX SPINTA Max Thrust (N)	OSCILLAZIONE MAX / Max Oscillation (mm)	RANGE COMPENSAZIONE / Compensation Range (mm)
		ASSIALE Axial (N)	RADIALE Radial (N)					
C.M.3 / ø 22	0,6	1800	610	0,015/0,018	6000	600	0,6	4
C.M.4 / ø 28	1,1	3040	1130	0,015/0,018	4500	900	0,6	4
C.M.5 / ø 32	1,9	3730	1500	0,015/0,018	4000	1200	0,8	4

### SERIE SP-CD con cuspidi standard / SERIES SP-CD with standard point

SERIE / Series	CODICE / Code
SP/CD 3	SP003.000.06
SP/CD 4	SP004.000.06
SP/CD 5	SP005.000.06
SP/CD 22	SP003.000.07
SP/CD 28	SP004.000.07
SP/CD 32	SP005.000.07

Con molla ORO a carico extra forte (p. 10) /  
 With GOLD Extra strong load spring (p. 10)

## SERIE SP-CD

Contropunta con sistema a carico differenziato  
 Live center with differential load



### VALIGETTA / Case

#### CARATTERISTICHE GENERALI SERIE SP-CD con sistema a carico differenziato / Technical data SERIES SP-CD with differential load

SERIE / Series	PESO / Weight (Kg)	CARICO / Load		ECCENTRICITA' / Eccentricity	MAX GIRI / '1' Max Rounds / '1' r.p.m.	MAX SPINTA Max Thrust (N)	OSCILLAZIONE MAX / Max Oscillation (mm)	RANGE COMPENSAZIONE / Compensation Range (mm)
		ASSIALE Axial (N)	RADIALE Radial (N)					
SP/CD 22	0,6	1800	610	0,015	6000	600	0,6	4
SP/CD 28	1,1	3040	1130	0,015	4500	900	0,6	4
SP/CD 32	1,9	3730	1500	0,015	4000	1200	0,8	4

#### SERIE SP-CD con sistema a carico differenziato / SERIES SP-CD with differential load

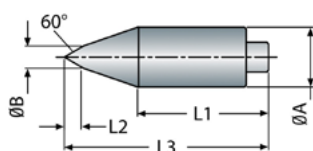
SERIE / Series	DIMENSIONI / Dimensions (mm)										CODICE / Code
	øA	D	E	øB	øF	øG	H	M	L	C	
SP/CD 22	42	43	50	20	13	6	5,2	19,7	25,3	53,3	SPCD22.000.04
SP/CD 28	60	55	50	28	16	6	5,2	19,7	26,6	54	SPCD28.000.04
SP/CD 32	70	57	60	35	51	6	5,2	24,4	28,9	59,6	SPCD32.000.04

Disponibile anche con cono morse 3-4-5 / Also available with morse taper 3-4-5

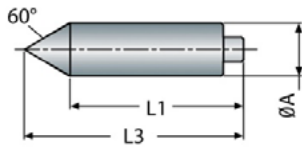
#### Cuspidi e molle in dotazione VALIGETTA SERIE SP-CD / Interchangeable points and springs included in SERIES SP-CD CASE

Dimensioni e specifiche tecniche per CUSPIDI e MOLLE a pag. 10 /  
 Dimensions and technical data for POINTS and SPRINGS at page n. 10

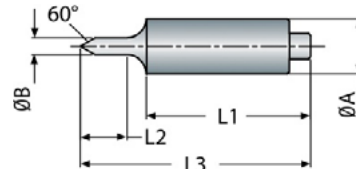
CID/T



CID/S



CID/C



Molla ORO.  
Carico extra forte  
GOLD spring.  
Extra strong load



Molla VERDE.  
Carico forte  
GREEN spring.  
Strong load



Molla ROSSA.  
Carico medio  
RED spring.  
Medium load

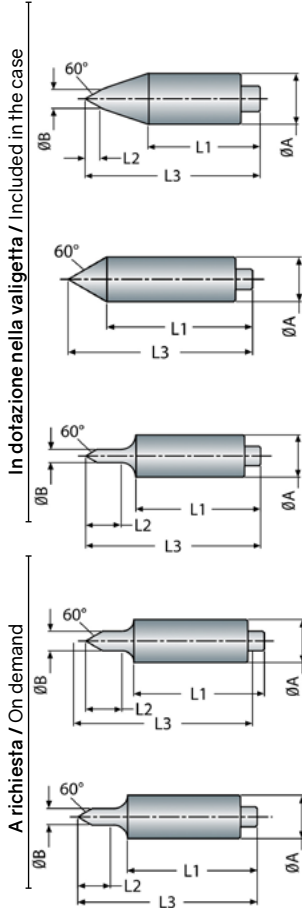


Molla BLU.  
Carico leggero  
BLUE spring.  
Light load

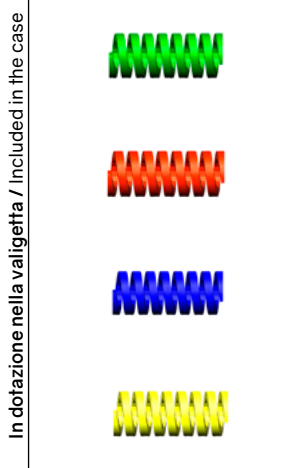


Molla GIALLA.  
Carico extra leggero  
YELLOW spring.  
Extra light load

## Specifiche tecniche cuspidi e molle SERIE SP-CD / Technical data interchangeable points and springs for SERIES SP-CD



CONO MORSE / Morse taper	SERIE / Series	DIMENSIONI / Dimensions					CODICE / Code
		L1	L2	L3	ØA	ØB	
SP/CD C.M.3 / Ø 22	CID/T3	34	5	54	13	6	SP003.002.02
SP/CD C.M.4 / Ø 28	CID/T4	35	5	55	16	6	SP004.002.02
SP/CD C.M.5 / Ø 32	CID/T5	32	5	57	21	6	SP005.002.02
SP/CD C.M.3 / Ø 22	CID/S3	42	-	54	13	-	SP003.002.01
SP/CD C.M.4 / Ø 28	CID/S4	41	-	55	16	-	SP004.002.01
SP/CD C.M.5 / Ø 32	CID/S5	38	-	57	21	-	SP005.002.01
SP/CD C.M.3 / Ø 22	CID/C3	39	11	54	13	4	SP003.002.05
SP/CD C.M.4 / Ø 28	CID/C4	38	11	55	16	4	SP004.002.05
SP/CD C.M.5 / Ø 32	CID/C5	37	11	57	21	4	SP005.002.05
SP/CD C.M.3 / Ø 22	CID/A3	39	11	54	13	6	SP003.002.03
SP/CD C.M.4 / Ø 28	CID/A4	38	12	55	16	6	SP004.002.03
SP/CD C.M.5 / Ø 32	CID/A5	37	12	57	21	6	SP005.002.03
SP/CD C.M.3 / Ø 22	CID/B3	39	11	54	13	4	SP003.002.04
SP/CD C.M.4 / Ø 28	CID/B4	38	11	55	16	4	SP004.002.04
SP/CD C.M.5 / Ø 32	CID/B5	37	11	57	21	4	SP005.002.04



MOLLE / Springs	SERIE / Series	CARATTERISTICHE / Characteristics (N/mm)	CODICE / Code
Molla ORO Carico extra forte GOLD spring Extra strong load	SP/CD C.M.3 / Ø 22	261	TEC000.071.06
	SP/CD C.M.4 / Ø 28	320	TEC000.071.07
	SP/CD C.M.5 / Ø 32	380	TEC000.071.08
Molla VERDE Carico forte GREEN spring Strong load	SP/CD C.M.3 / Ø 22	61,3	TEC000.071.22
	SP/CD C.M.4 / Ø 28	87,3	TEC000.071.28
	SP/CD C.M.5 / Ø 32	96,4	TEC000.071.29
Molla ROSSA Carico medio RED spring Medium load	SP/CD C.M.3 / Ø 22	24,5	TEC000.071.19
	SP/CD C.M.4 / Ø 28	44,4	TEC000.071.20
	SP/CD C.M.5 / Ø 32	34,1	TEC000.071.21
Molla BLU Carico leggero BLUE spring Light load	SP/CD C.M.3 / Ø 22	17,8	TEC000.071.26
	SP/CD C.M.4 / Ø 28	25,8	TEC000.071.27
	SP/CD C.M.5 / Ø 32	23	TEC000.071.18
Molla GIALLA Carico extra leggero YELLOW spring Extra light load	SP/CD C.M.3 / Ø 22	9,8	TEC000.071.15
	SP/CD C.M.4 / Ø 28	13,7	TEC000.071.16
	SP/CD C.M.5 / Ø 32	14,1	TEC000.071.17

## SERIE SP-CD

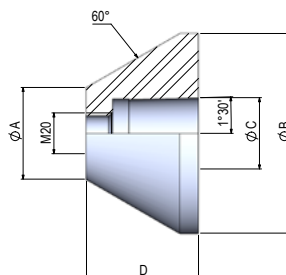
Contropunta con sistema a carico differenziato  
 Live center with differential load

### RICAMBI E ACCESSORI/ Spare parts and extra items

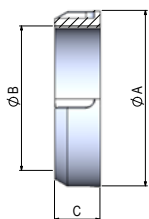
#### FLANGE PER CONTROPUNTA / Flange for live center

SERIE / Series	DIMENSIONI / Dimensions (mm)				CODICE / Code
	øA	øB	øC	D	
FPI/45/98	45	98	35	55	RPW000.001.05
FPI/95/148	95	148	35	55	RPW000.002.05
FPI/145/198	145	198	35	55	RPW000.003.05
FPI/195/248	195	248	35	55	RPW000.004.05
FPI/245/298	245	298	35	55	RPW000.005.05

øB a richiesta fino a ø1000 /  
 øB on request till ø1000

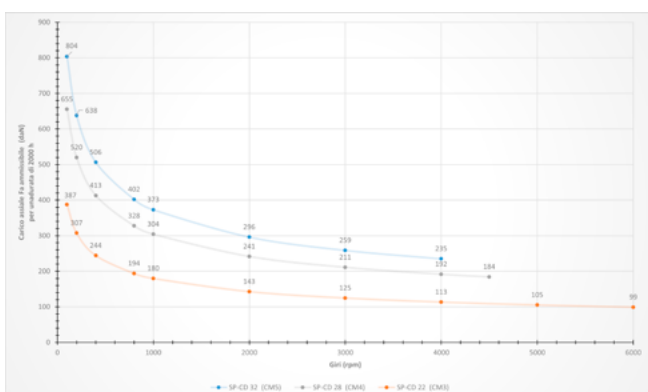


#### GHIERA DI ESTRAZIONE PER SERIE POWER / SP-G / MA Ring nut for SERIES POWER / SP-G / MA



CONO MORSE / Morse Taper	DIMENSIONI / Dimensions (mm)			SERIE / Series	CODICE / Code
	øA	øB	C		
3	75	60x1,5	22	GHP 60	RPW003.005.00
4	82	70x1,5	22	GHP 70	RPW004.005.00
5	105	90x1,5	20	GHP 90	RPW005.005.00
6	140	110x1,5	23	GHP 110	RPW006.005.00

#### Grafico carico assiale SP-CD SERIES SP-CD assial graph



#### Grafico carico radiale SP-CD SERIES SP-CD radial graph

