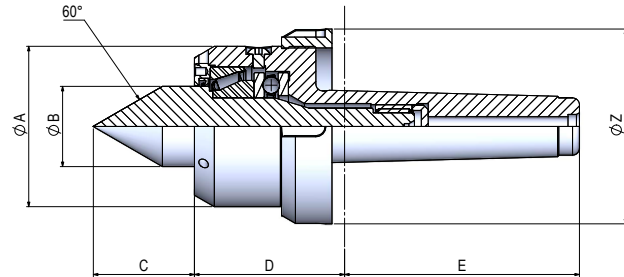


SERIE POWER P

Contropunta ad alto carico con ghiera di estrazione
 High load live center with ring nut



SERIE POWER P con cuspid standard / SERIES POWER P with standard point

CONO MORSE / Morse Taper	DIMENSIONI / Dimensions (mm)						SERIE / Series	CODICE / Code
	$\varnothing A$	$\varnothing B$	C	D	E	$\varnothing Z$		
C.M.3	60	28	38	51	92	75	POWER 3/P	RPW003.000.07
C.M.4	70	35	46	54	115	82	POWER 4/P	RPW004.000.10
C.M.5	90	40	53	65	136	105	POWER 5/P	RPW005.000.08
C.M.6	130	65	71	102,5	195	160*	POWER 6/P	RPW006.000.07
C.M.7	185	80	95	148	284	220*	POWER 7/P	RPW007.000.07
M80	185	80	95	148	210	220*	POWER 80/P	RPW080.000.07
M100	185	80	95	148	242	220*	POWER 100/P	RPW0100.000.07

$\varnothing Z$: specifiche GHIERA DI ESTRAZIONE a pag. 23 / $\varnothing Z$: RING NUT specifics at page n. 23

CARATTERISTICHE GENERALI POWER P - PF / Technical data POWER P - PF

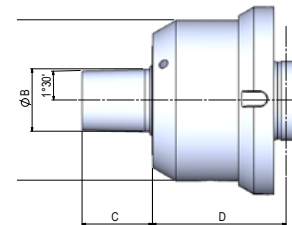
PESO / Weight (kg)	CARICO / Load		ECCENTRICITA' / Eccentricity	MAX GIRI / 1' Max Rounds / 1' r.p.m.
	ASSIALE Axial (N)	RADIALE Radial (N)		
1,9	3040	2350	0,005	4000
1,9	3730	3450	0,005	4000
3,9	6370	4010	0,005	2800
9,1	10290	13960	0,01	2400
38	29290	30040	0,01	1000
35	29190	30380	0,01	1000
40	29190	30380	0,01	1000

* - Ghiera CM6: battuta posteriore $\varnothing 75 \times 5$ mm / Ring Nut MT6: rear rabbet $\varnothing 75 \times 5$ mm
 - Ghiera CM7/M80/M100: battuta posteriore $\varnothing 125 \times 9,5$ mm /
 Ring Nut MT7/M80/M100: rear rabbet $\varnothing 125 \times 9,5$ mm

SERIE POWER PF / Series POWER PF

CONO MORSE / Morse Taper	DIMENSIONI / Dimensions (mm)				SERIE / Series	CODICE / Code
	$\varnothing A$	$\varnothing B$	C	D		
C.M.4	70	35	40	54	POWER 4/PF	RPW004.000.13
C.M.5	90	35	40	65	POWER 5/PF	RPW005.000.13
C.M.6	130	35	40	92,5	POWER 6/PF	RPW006.000.11

A richiesta fino a M100
 con carichi irridimensionati /
 On request till M100 with
 modified loads



SERIE POWER P

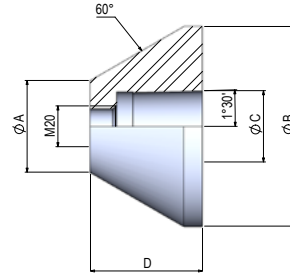
Contropunta ad alto carico con ghiera di estrazione
 High load live center with ring nut

RICAMBI E ACCESSORI/ Spare parts and extra items

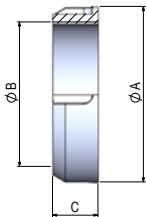
FLANGE PER CONTROPUNTA / Flange for live center

SERIE / Series	DIMENSIONI / Dimensions (mm)				CODICE / Code
	øA	øB	øC	D	
FPI/45/98	45	98	35	55	RPW000.001.05
FPI/95/148	95	148	35	55	RPW000.002.05
FPI/145/198	145	198	35	55	RPW000.003.05
FPI/195/248	195	248	35	55	RPW000.004.05
FPI/245/298	245	298	35	55	RPW000.005.05

øB a richiesta fino a ø1000 /
 øB on request till ø1000



GHIERA DI ESTRAZIONE PER SERIE POWER / SP-G / MA Ring nut for SERIES POWER / SP-G / MA



CONO MORSE / Morse Taper	DIMENSIONI / Dimensions (mm)			SERIE / Series	CODICE / Code
	øA	øB	C		
3	75	60x1,5	22	GHP 60	RPW003.005.00
4	82	70x1,5	22	GHP 70	RPW004.005.00
5	105	90x1,5	20	GHP 90	RPW005.005.00
6	140	110x1,5	23	GHP 110	RPW006.005.00

Grafico carico assiale POWER P SERIES POWER P assial graph

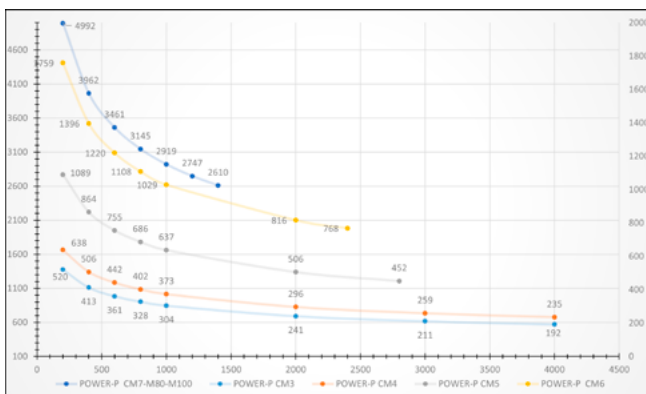


Grafico carico radiale POWER P SERIES POWER P radial graph

