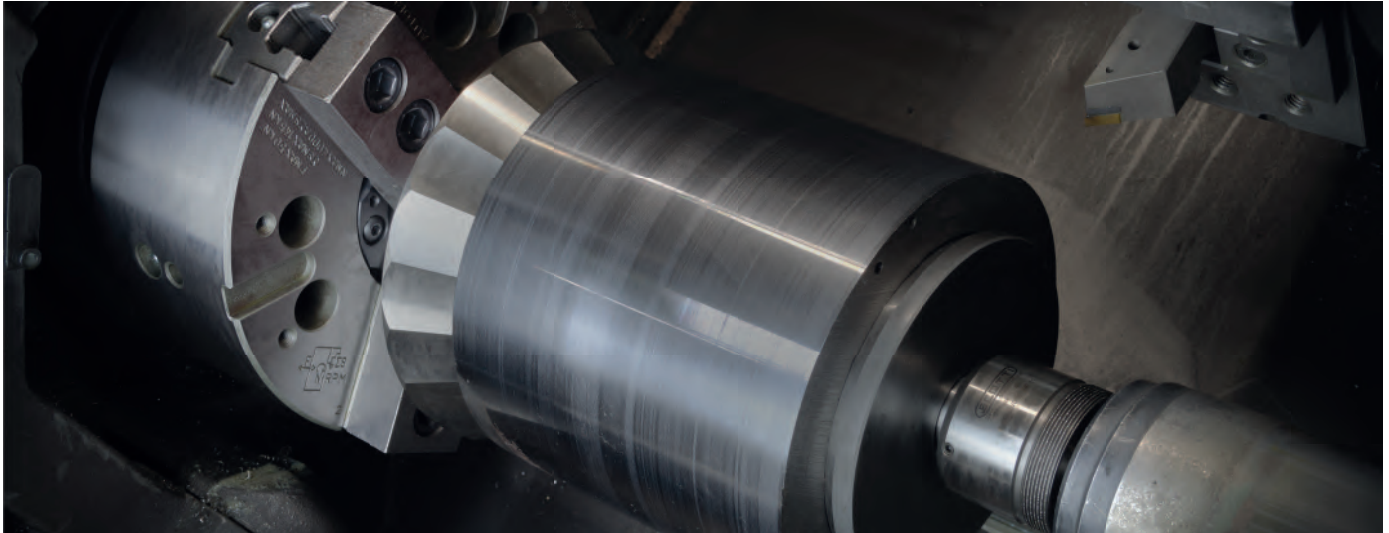


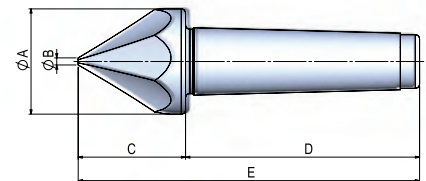
## SERIE STTF - STTI

Trascinatore fisso / con testine intercambiabili per tubi  
 Face drivers for tubes / Interchangeable face drivers



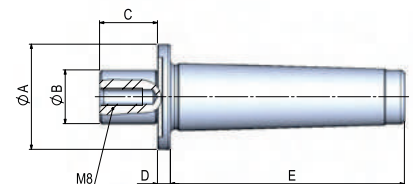
### TRASCINATORE PER TUBI - SERIE STTF / Face driver for tubes - STTF SERIES

| SERIE / Series                   | DIMENSIONI / Dimensions (mm) |    |    |        |     | PESO / Weight (Kg) | CODICE / Code |
|----------------------------------|------------------------------|----|----|--------|-----|--------------------|---------------|
|                                  | øA                           | øB | C  | D      | E   |                    |               |
| STTF C.M.2<br>STTF Morse Taper 2 | 48                           | 8  | 50 | 69     | 119 | 0,5                | STTF002.000*  |
| STTF C.M.3<br>STTF Morse Taper 3 | 48                           | 8  | 50 | 86     | 136 | 0,7                | STTF003.000*  |
| STTF C.M.4<br>STTF Morse Taper 4 | 48                           | 8  | 50 | 109    | 159 | 1                  | STTF004.000*  |
| STTF C.M.5<br>STTF Morse Taper 5 | 48                           | 8  | 50 | 136    | 186 | 1,9                | STTF005.000*  |
| STTF ø30x50<br>STTF ø30x50       | 48                           | 8  | 50 | ø30X50 | 100 | 0,8                | STTF006.000*  |



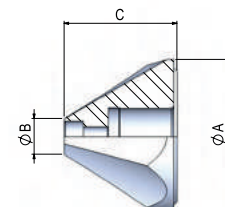
### TRASCINATORE PER TUBI - SERIE STTI / Face driver for tubes - STTI SERIES

| SERIE / Series                   | DIMENSIONI / Dimensions (mm) |    |    |   |     | PESO / Weight (Kg) | CODICE / Code |
|----------------------------------|------------------------------|----|----|---|-----|--------------------|---------------|
|                                  | øA                           | øB | C  | D | E   |                    |               |
| STTI C.M.3<br>STTI Morse Taper 3 | 49                           | 25 | 27 | 6 | 86  | 0,5                | STTI1003.000* |
| STTI C.M.4<br>STTI Morse Taper 4 | 49                           | 25 | 27 | 6 | 109 | 0,7                | STTI1004.000* |
| STTI C.M.5<br>STTI Morse Taper 5 | 49                           | 25 | 27 | 6 | 136 | 1,6                | STTI1005.000* |
| STTFIC.M.6<br>STTI Morse Taper 6 | 49                           | 25 | 27 | 6 | 190 | 2,3                | STTI1006.000* |
| STTI ø30x50<br>STTI ø30x50       | 49                           | 25 | 27 | 6 | 50  | 0,5                | STTI1000.000* |



### TESTINE IN HSS PER TRASCINATORE STTI / HSS head for STTI SERIES

| SERIE / Series       | DIMENSIONI / Dimensions (mm) |     |    | CODICE / Code |
|----------------------|------------------------------|-----|----|---------------|
|                      | øA                           | øB  | C  |               |
| TTI ø18<br>TTI ø18   | 68                           | 22  | 50 | TTI018.068*   |
| TTI ø63<br>TTI ø63   | 113                          | 67  | 50 | TTI063.113*   |
| TTI ø108<br>TTI ø108 | 158                          | 111 | 50 | TTI108.158*   |
| TTI ø150<br>TTI ø150 | 200                          | 154 | 50 | TTI150.200*   |
| TTI ø195<br>TTI ø195 | 245                          | 199 | 50 | TTI195.245*   |



\* Articoli con scorta minima limitata a magazzino, non garantita disponibilità immediata /  
 Items with limited minimum stock, immediate availability not guaranteed