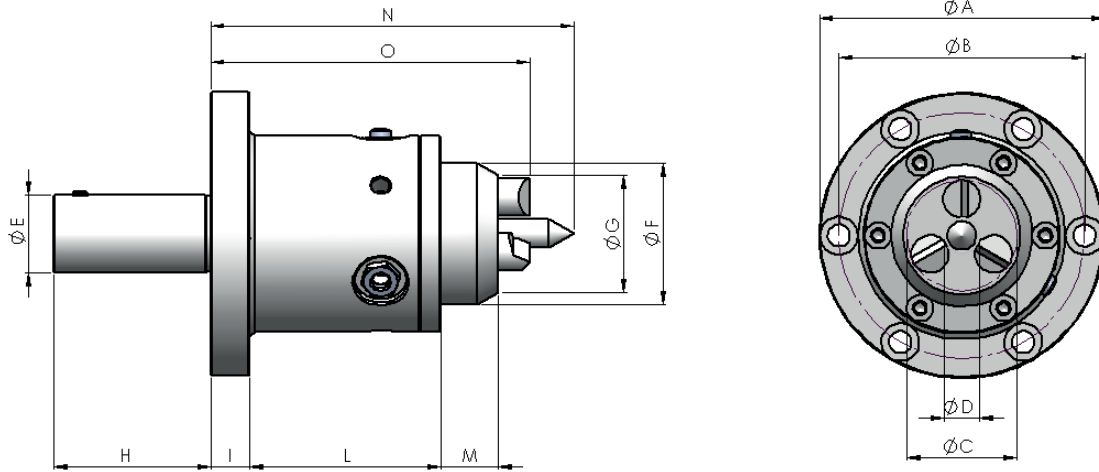


SERIE STT $\varnothing 109$ mm

Trascinatore con punta mobile e compensato a molla
 Face driver with spring operating center point



CARATTERISTICHE GENERALI / Technical data

SERIE / Series	DIMENSIONI / Dimensions (mm)													CAMPO DI IMPIEGO / Application Range (mm)		PESO / Weight (Kg)	CODICE / Code
	$\varnothing A$	$\varnothing B$	$\varnothing C$	$\varnothing D$	$\varnothing E$	$\varnothing F$	$\varnothing G$	H	I	L	M	N	O	$\varnothing Min.$	$\varnothing Max.$		
STT $\varnothing 109$	109	94	43	13,7	30	54	45	60	15	73	22	137,5	123,5	43	100	4	STT109.000.01*

Con artiglio scaricato $\varnothing min 20$ / With unloaded pin $\varnothing min 20$

ARTIGLI STANDARD / Standard pins

ARTIGLIO STANDARD / Standard driving pin	
D	14,3
L	73
CODICE / Code	DTST00.006.01*

ARTIGLIO STANDARD per lavorazioni in senso orario e antiorario / Standard driving pin	
D	14,3
L	73
CODICE / Code	DTST00.006.02*

ARTIGLIO ZIGRINATO / Milled driving pin	
D	14,3
L	73
CODICE / Code	DTST00.006.03*

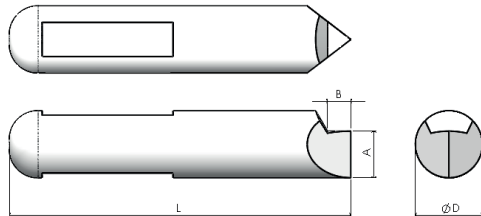
Non garantita disponibilità a magazzino /
 Availability in stock not guaranteed

* Articoli con scorta minima limitata a magazzino, non garantita disponibilità immediata / Items with limited minimum stock, immediate availability not guaranteed

ARTIGLI SCARICATI SERIE U per lavorazioni in entrambi i sensi /
 Unloaded driving pins SERIES U



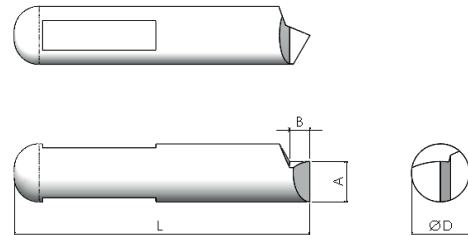
øD	L	A	B	Ø	CODICE / Code
14,3	73	9,95	5	35	DTST00.006.04*
14,3	73	7,45	5	30	DTST00.006.05*
14,3	73	4,95	5	25	DTST00.006.06*
14,3	73	2,45	5	20	DTST00.006.07*



ARTIGLI SCARICATI SERIE O per lavorazioni in senso orario /
 Unloaded driving pins SERIES O



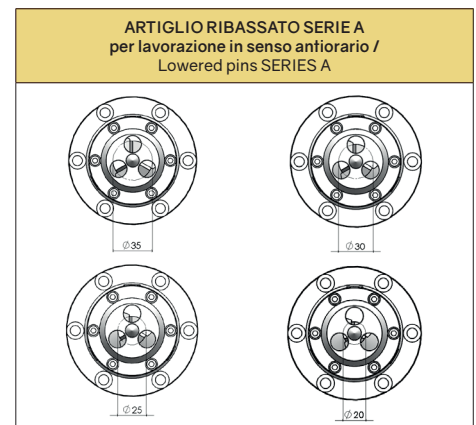
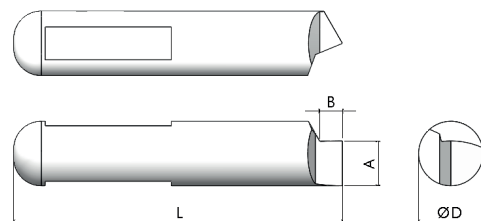
øD	L	A	B	Ø	CODICE / Code
14,3	73	9,95	5	35	DTST00.006.08*
14,3	73	7,45	5	30	DTST00.006.09*
14,3	73	4,95	5	25	DTST00.006.10*
14,3	73	2,45	5	20	DTST00.006.11*



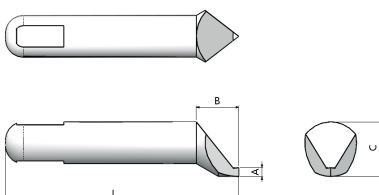
ARTIGLI SCARICATI SERIE A per lavorazioni in senso antiorario /
 Unloaded driving pins SERIES A



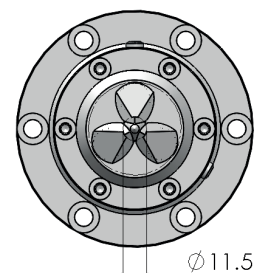
øD	L	A	B	Ø	CODICE / Code
14,3	73	9,95	5	35	DTST00.006.12*
14,3	73	7,45	5	30	DTST00.006.13*
14,3	73	4,95	5	25	DTST00.006.14*
14,3	73	2,45	5	20	DTST00.006.15*



ARTIGLI SCARICATO Ø 10 mm /
 Unloaded driving pin Ø 10 mm



øD	L	A	B	C	Ø	CODICE / Code
14,3	80	3	14,53	18,65	11,5	DTST00.006.16*



Gli artigli ribassati permettono di lavorare al di sotto del øMin. del campo di impiego degli artigli di serie montati sul trascinatore /
 Lowered pins enable thinner workings than standard øMin. size of the driving pins assembled on the face driver (see first table).

* Articoli con scorta minima limitata a magazzino, non garantita disponibilità immediata / Items with limited minimum stock, immediate availability not guaranteed

SERIE STT $\varnothing 109$ mm

Trascinatore con punta mobile e compensato a molla
 Face driver with spring operating center point

PUNTA STANDARD / Standard point

PUNTA STANDARD / Standard point		
$\varnothing D$	L	CODICE / Code
11	121	PTST00.005.01*

PUNTA SCARICATA / Unloaded point

PUNTA SCARICATA / Unloaded point		
$\varnothing A$	L	CODICE / Code
4	121	PTST00.005.02*

Da utilizzare con artiglio scaricato per presa $\varnothing 11,5$ - cod. DTST00.006.16
 To be used with unloaded pin $\varnothing 11,5$ - cod. DTST00.006.16

PUNTA CAPORUGGINE / Center points with slots

PUNTA CAPORUGGINE $\varnothing 9 - 20$ / Center point whit slot $\varnothing 9 - 20$			
$\varnothing A$	$\varnothing B$	L	CODICE / Code
9	20	122,21	PTST00.005.03*

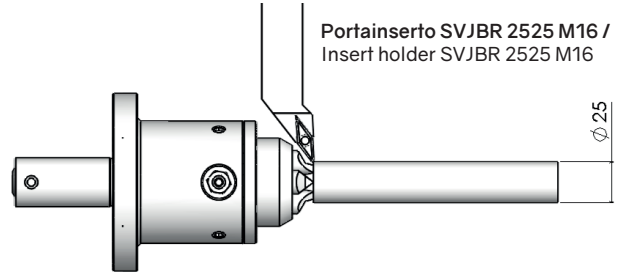
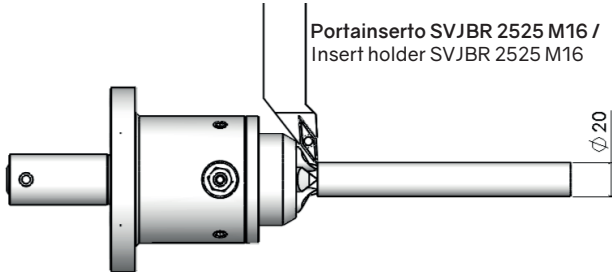
PUNTA CAPORUGGINE $\varnothing 18 - 30$ / Center point whit slot $\varnothing 18 - 30$			
$\varnothing A$	$\varnothing B$	L	CODICE / Code
18	30	114,41	PTST00.005.04*

* Articoli con scorta minima limitata a magazzino, non garantita disponibilità immediata / Items with limited minimum stock, immediate availability not guaranteed

SERIE STT $\varnothing 109$ mm

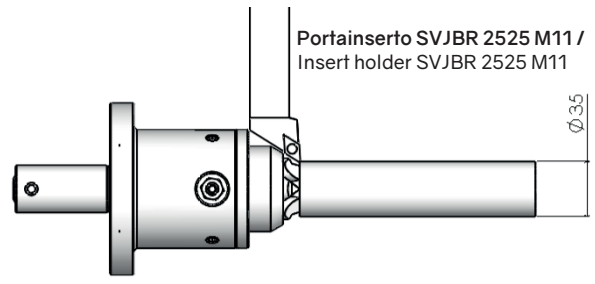
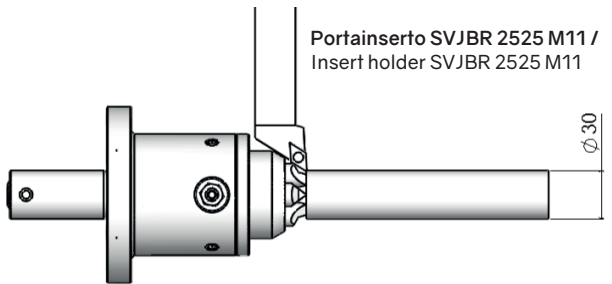
Trascinatore con punta mobile e compensato a molla
 Face driver with spring operating center point

ESEMPI DI LAVORAZIONE / Working examples



	CODICE / Code
Artiglio / Driving pin	DTST00.006.07*
Artiglio / Driving pin	DTST00.006.11*
Artiglio / Driving pin	DTST00.006.15*

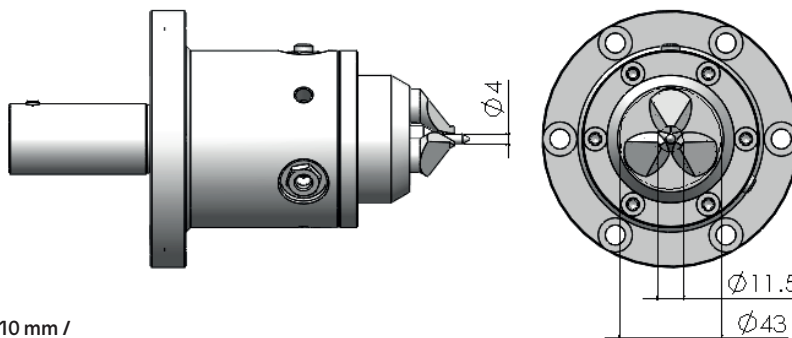
	CODICE / Code
Artiglio / Driving pin	DTST00.006.06*
Artiglio / Driving pin	DTST00.006.10*
Artiglio / Driving pin	DTST00.006.14*



	CODICE / Code
Artiglio / Driving pin	DTST00.006.05*
Artiglio / Driving pin	DTST00.006.09*
Artiglio / Driving pin	DTST00.006.13*

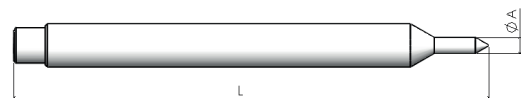
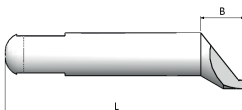
	CODICE / Code
Artiglio / Driving pin	DTST00.006.04*
Artiglio / Driving pin	DTST00.006.08*
Artiglio / Driving pin	DTST00.006.12*

Trascinatore STT 109 scaricato / Face driver STT 109 Unloaded



ARTIGLI SCARICATO $\varnothing 10$ mm /
 Unloaded driving pin $\varnothing 10$ mm

PUNTA SCARICATA /
 Unloaded point



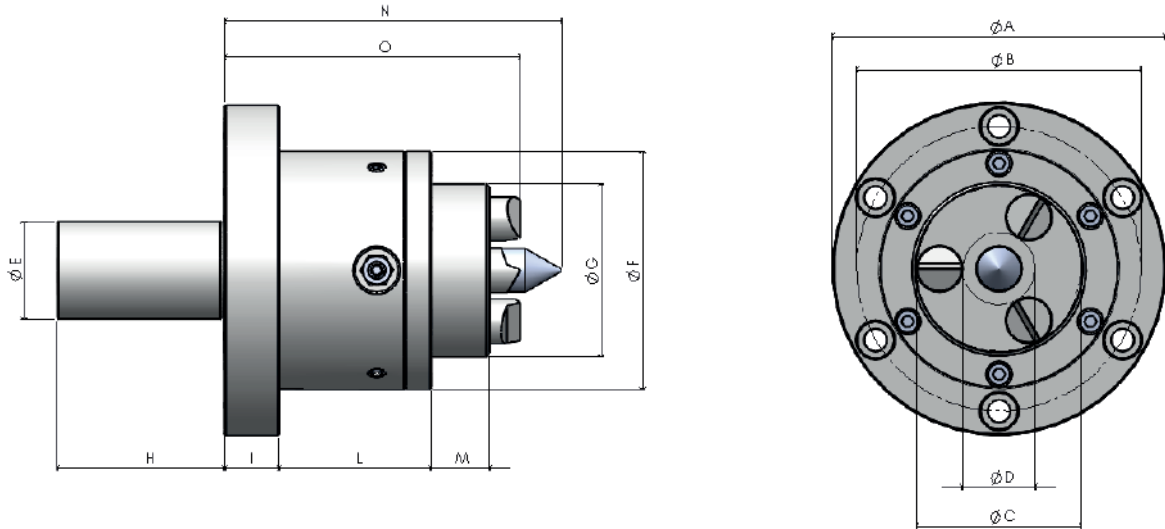
$\varnothing D$	L	A	B	C	\varnothing	CODICE / Code
14,3	80	3	14,53	18,65	11,5	DTST00.006.16*

$\varnothing A$	L	CODICE / Code
4	121	PTST00.005.02*

* Articoli con scorta minima limitata a magazzino, non garantita disponibilità immediata / Items with limited minimum stock, immediate availability not guaranteed

SERIE STT $\varnothing 153$ mm

Trascinatore con punta mobile e compensato a molla
 Face driver with spring operating center point



CARATTERISTICHE GENERALI / Technical data

SERIE / Series	DIMENSIONI / Dimensions (mm)													CAMPO DI IMPIEGO / Application Range (mm)		PESO / Weight (Kg)	CODICE / Code
	$\varnothing A$	$\varnothing B$	$\varnothing C$	$\varnothing D$	$\varnothing E$	$\varnothing F$	$\varnothing G$	H	I	L	M	N	O	\varnothing Min.	\varnothing Max.		
STT $\varnothing 153$	153	131	75	34,4	45	110	80	77	25	70	27	151,5	134	75	160	10	STT153.000.01*

Con artiglio scaricato \varnothing min 50 / With unloaded pin \varnothing min 50

ARTIGLI STANDARD / Standard pins

ARTIGLIO STANDARD / Standard driving pin	
D	20,3
L	89
CODICE / Code	DTST00.006.17*

ARTIGLIO STANDARD per lavorazioni in senso orario e antiorario / Standard driving pin	
D	20,3
L	89
CODICE / Code	DTST00.006.18*

ARTIGLIO ZIGRINATO / Milled driving pin	
D	20,3
L	89
CODICE / Code	DTST00.006.19*

Non garantita disponibilità a magazzino /
 Availability in stock not guaranteed

* Articoli con scorta minima limitata a magazzino, non garantita disponibilità immediata / Items with limited minimum stock, immediate availability not guaranteed

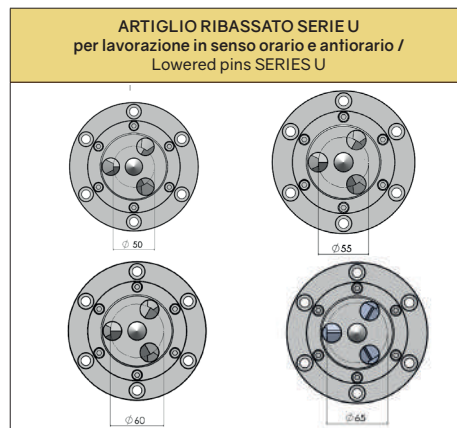
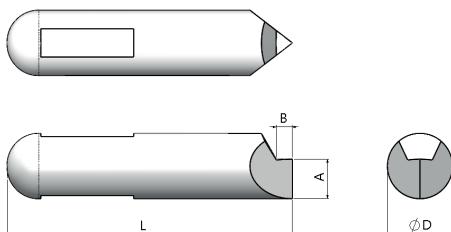
SERIE STT $\varnothing 153$ mm

Trascinatore con punta mobile e compensato a molla
 Face driver with spring operating center point

ARTIGLI SCARICATI SERIE U per lavorazioni in entrambi i sensi /
 Unloaded driving pins SERIES U



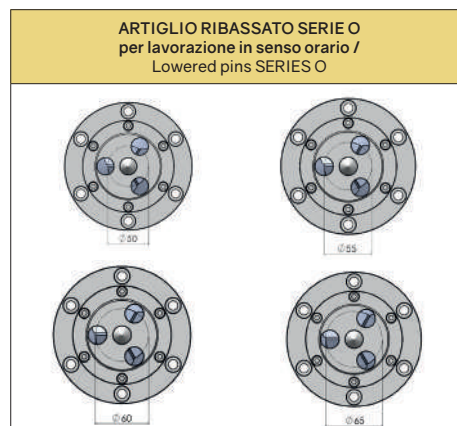
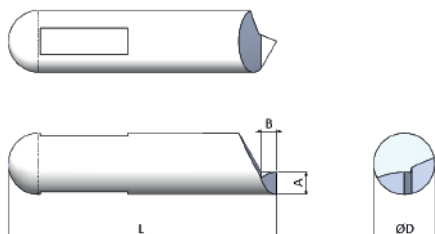
$\varnothing D$	L	A	B	\varnothing	CODICE / Code
20,3	89	14,8	5	65	DTST00.006.20*
20,3	89	14,8	5	60	DTST00.006.21*
20,3	89	14,8	5	55	DTST00.006.22*
20,3	89	14,8	5	50	DTST00.006.23*



ARTIGLI SCARICATI SERIE O per lavorazioni in senso orario /
 Unloaded driving pins SERIES O



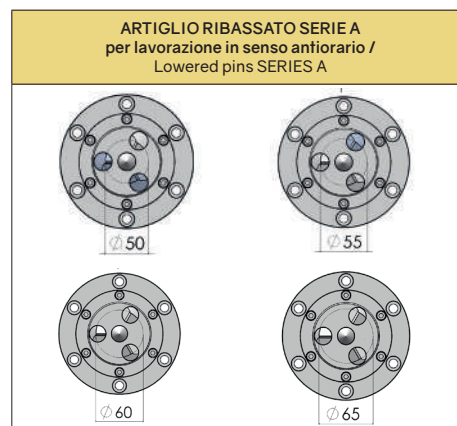
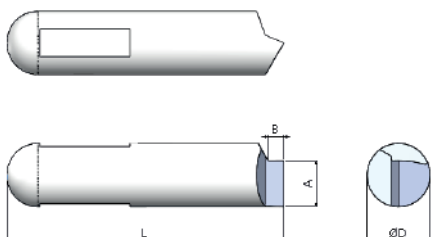
$\varnothing D$	L	A	B	\varnothing	CODICE / Code
20,3	89	14,8	5	65	DTST00.006.24*
20,3	89	14,8	5	60	DTST00.006.25*
20,3	89	14,8	5	55	DTST00.006.26*
20,3	89	14,8	5	50	DTST00.006.27*



ARTIGLI SCARICATI SERIE A per lavorazioni in senso antiorario /
 Unloaded driving pins SERIES A



$\varnothing D$	L	A	B	\varnothing	CODICE / Code
20,3	89	14,8	5	65	DTST00.006.28*
20,3	89	14,8	5	60	DTST00.006.29*
20,3	89	14,8	5	55	DTST00.006.30*
20,3	89	14,8	5	50	DTST00.006.31*



Gli artigli ribassati permettono di lavorare al di sotto del $\varnothing Min.$ del campo di impiego degli artigli di serie montati sul trascinatore /
 Lowered pins enable thinner workings than standard $\varnothing Min.$ size of the driving pins assembled on the face driver (see first table).

* Articoli con scorta minima limitata a magazzino, non garantita disponibilità immediata / Items with limited minimum stock, immediate availability not guaranteed

SERIE STT $\varnothing 153$ mm

Trascinatore con punta mobile e compensato a molla
 Face driver with spring operating center point

PUNTA STANDARD / Standard point

PUNTA STANDARD / Standard point		
$\varnothing D$	L	CODICE / Code
20	144,5	PTST00.005.05*

PUNTE CAPORUGGINE / Center points with slots

PUNTA CAPORUGGINE $\varnothing 18 - 30$ / Center point whit slot $\varnothing 18 - 30$			
$\varnothing A$	$\varnothing B$	L	CODICE / Code
18	30	144,4	PTST00.005.06*

PUNTA CAPORUGGINE $\varnothing 28 - 42$ / Center point whit slot $\varnothing 28 - 42$			
$\varnothing A$	$\varnothing B$	L	CODICE / Code
28	42	145,7	PTST00.005.07*

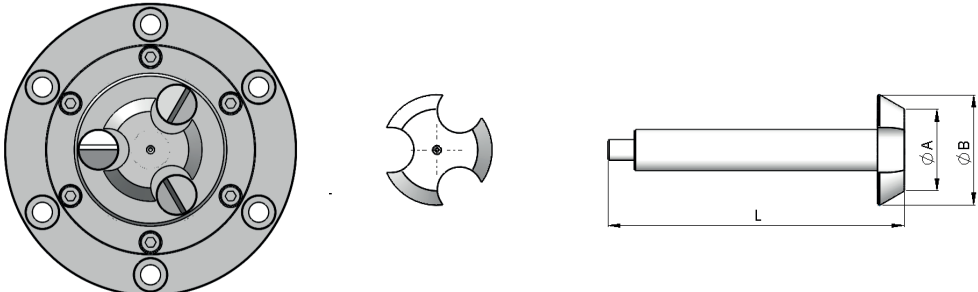
* Articoli con scorta minima limitata a magazzino, non garantita disponibilità immediata / Items with limited minimum stock, immediate availability not guaranteed

SERIE STT $\varnothing 153$ mm

Trascinatore con punta mobile e compensato a molla
 Face driver with spring operating center point

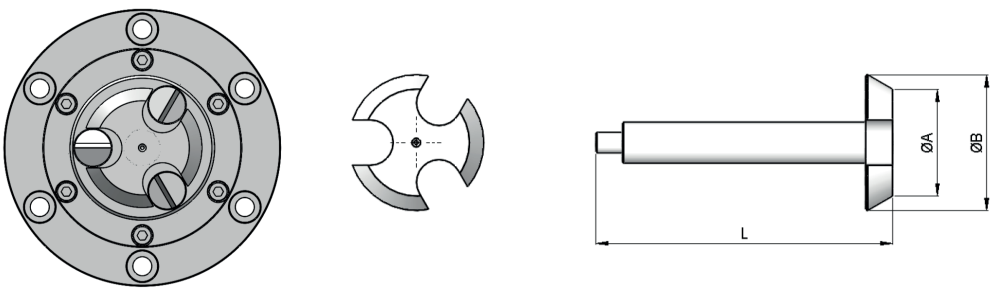
PUNTE CAPORUGGINE / Center points with slots

PUNTA CAPORUGGINE $\varnothing 40 - 54$ /
 Center point whit slot $\varnothing 40 - 54$



$\varnothing A$	$\varnothing B$	L	CODICE / Code
40	54	145,3	PTST00.005.08*

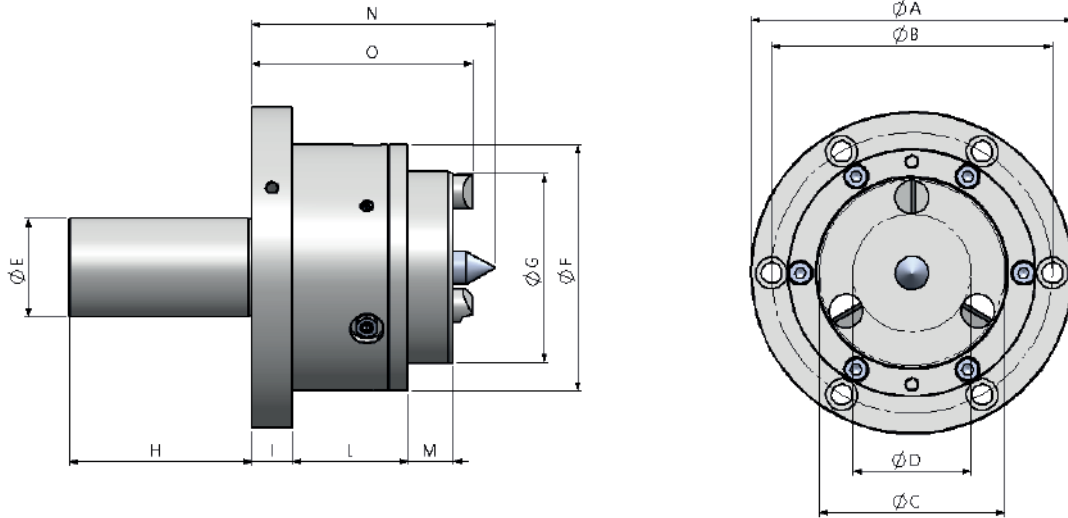
PUNTA CAPORUGGINE $\varnothing 52 - 66$ /
 Center point whit slot $\varnothing 52 - 66$



$\varnothing A$	$\varnothing B$	L	CODICE / Code
52	66	144,9	PTST00.005.09*

SERIE STT $\varnothing 195$ mm

Trascinatore con punta mobile e compensato a molla
 Face driver with spring operating center point



CARATTERISTICHE GENERALI / Technical data

SERIE / Series	DIMENSIONI / Dimensions (mm)													CAMPO DI IMPIEGO / Application Range (mm)		PESO / Weight (Kg)	CODICE / Code
	$\varnothing A$	$\varnothing B$	$\varnothing C$	$\varnothing D$	$\varnothing E$	$\varnothing F$	$\varnothing G$	H	I	L	M	N	O	$\varnothing Min.$	$\varnothing Max.$		
STT $\varnothing 195$	195	170	112,3	71,7	60	150	115	110	25	70	27	152	136	113	240	20	STT195.000.01*

ARTIGLI STANDARD / Standard pins

ARTIGLIO STANDARD / Standard driving pin	
D	20,3
L	89
CODICE / Code	DTST00.006.17*

ARTIGLIO STANDARD per lavorazioni in senso orario e antiorario / Standard driving pin	
D	20,3
L	89
CODICE / Code	DTST00.006.18*

ARTIGLIO ZIGRINATO / Milled driving pin	
D	20,3
L	89
CODICE / Code	DTST00.006.19*

Non garantita disponibilità a magazzino /
 Availability in stock not guaranteed

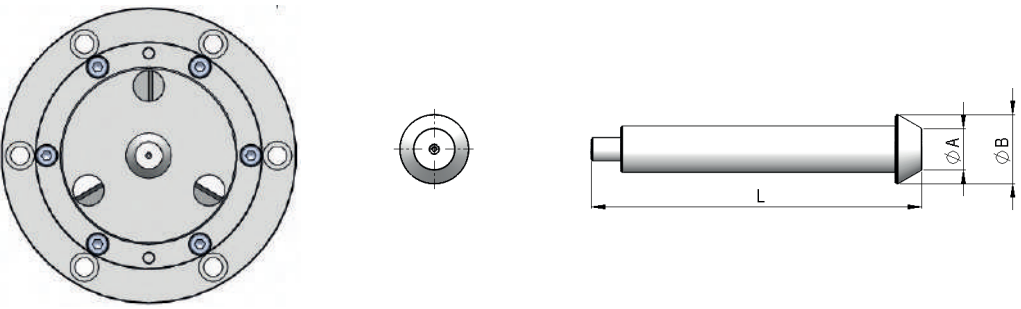
PUNTA STANDARD / Standard point

PUNTA STANDARD / Standard point		$\varnothing D$	L	CODICE / Code
		20	144,5	PTST00.005.10*

* Articoli con scorta minima limitata a magazzino, non garantita disponibilità immediata / Items with limited minimum stock, immediate availability not guaranteed

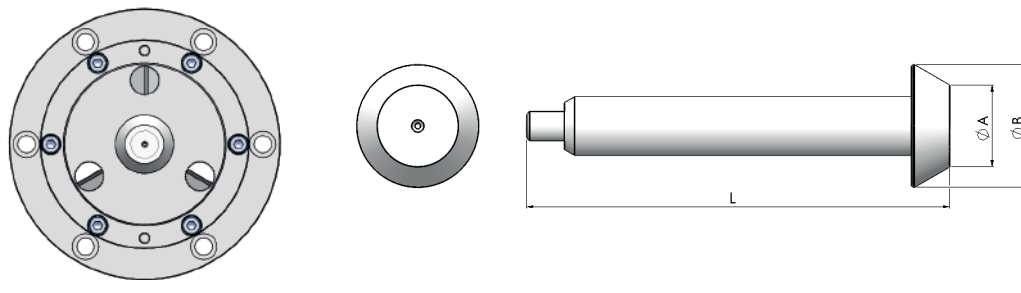
PUNTE CAPORUGGINE / Center points with slots

PUNTA CAPORUGGINE \varnothing 18 - 30 /
 Center point whit slot \varnothing 18 - 30



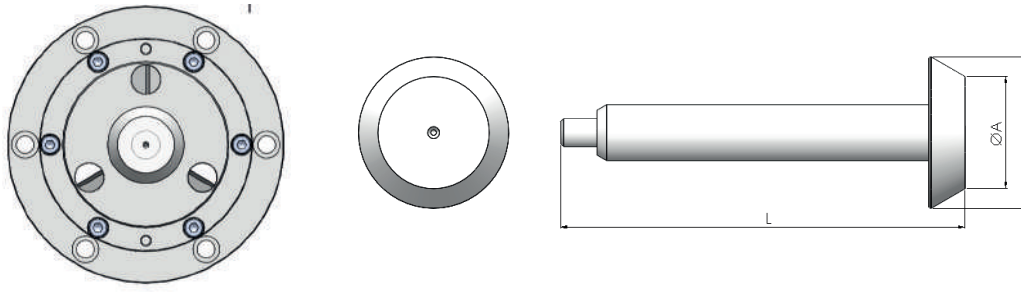
$\varnothing A$	$\varnothing B$	L	CODICE / Code
18	30	144,4	PTST00.005.06*

PUNTA CAPORUGGINE \varnothing 28 - 42 /
 Center point with slot \varnothing 28 - 42



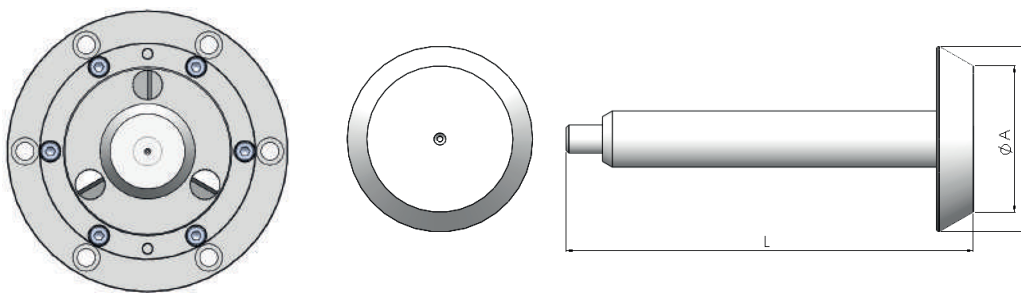
$\varnothing A$	$\varnothing B$	L	CODICE / Code
28	42	145,75	PTST00.005.11*

PUNTA CAPORUGGINE \varnothing 40 - 54 /
 Center point whit slot \varnothing 40 - 54



$\varnothing A$	$\varnothing B$	L	CODICE / Code
40	54	145,36	PTST00.005.12*

PUNTA CAPORUGGINE \varnothing 42 - 66 /
 Center point whit slot \varnothing 42 - 66

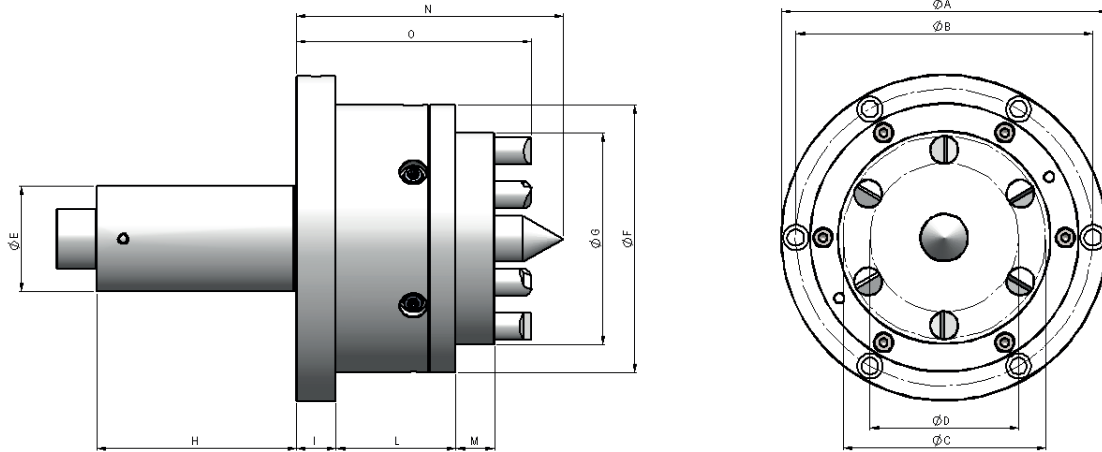


$\varnothing A$	$\varnothing B$	L	CODICE / Code
52	66	144,97	PTST00.005.13*

* Articoli con scorta minima limitata a magazzino, non garantita disponibilità immediata / Items with limited minimum stock, immediate availability not guaranteed

SERIE STT $\varnothing 245$ mm

Trascinatore con punta mobile e compensato a molla
 Face driver with spring operating center point



CARATTERISTICHE GENERALI / Technical data

SERIE / Series	DIMENSIONI / Dimensions (mm)													CAMPO DI IMPIEGO / Application Range (mm)		PESO / Weight (Kg)	CODICE / Code
	ØA	ØB	ØC	ØD	ØE	ØF	ØG	H	I	L	M	N	O	ØMin.	ØMax		
STT $\varnothing 245$	245	223	152,3	111,7	80	202	160	150	30	90	29	187	177	170	320	38	STT245.000.01*

ARTIGLI STANDARD / Standard pins

ARTIGLIO STANDARD / Standard driving pin

D	20,3
L	119
CODICE / Code	DTST00.006.32*

ARTIGLIO STANDARD per lavorazioni in senso orario e antiorario / Standard driving pin

D	20,3
L	119
CODICE / Code	DTST00.006.33*

ARTIGLIO ZIGRINATO / Milled driving pin

D	20,3
L	119
CODICE / Code	DTST00.006.34*

Non garantita disponibilità a magazzino / Availability in stock not guaranteed

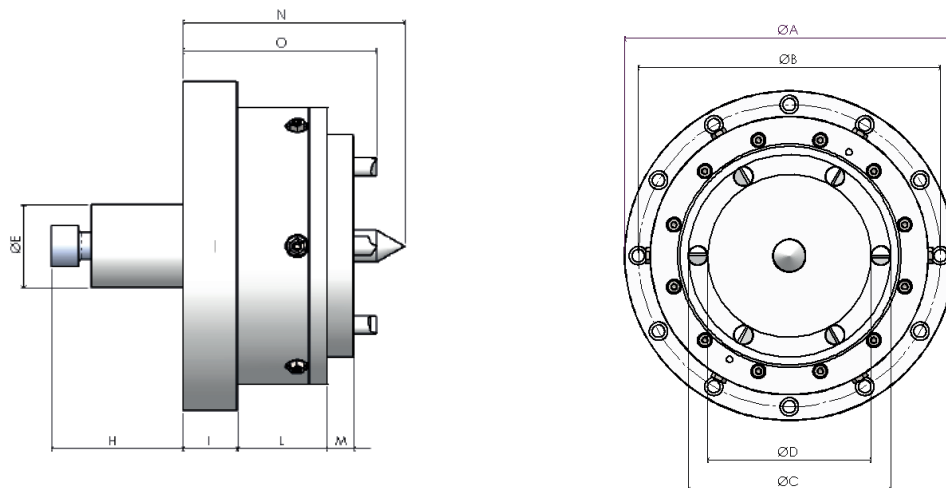
PUNTA STANDARD / Standard point

PUNTA STANDARD / Standard point	ØD	L	CODICE / Code
	20	144,5	PTST00.005.14*

* Articoli con scorta minima limitata a magazzino, non garantita disponibilità immediata / Items with limited minimum stock, immediate availability not guaranteed

SERIE STT $\varnothing 360$ mm

Trascinatore con punta mobile e compensato a molla
 Face driver with spring operating center point



CARATTERISTICHE GENERALI / Technical data

SERIE / Series	DIMENSIONI / Dimensions (mm)													CAMPO DI IMPIEGO / Application Range (mm)		PESO / Weight (Kg)	CODICE / Code
	$\varnothing A$	$\varnothing B$	$\varnothing C$	$\varnothing D$	$\varnothing E$	$\varnothing F$	$\varnothing G$	H	I	L	M	N	O	$\varnothing Min.$	$\varnothing Max.$		
STT $\varnothing 360$	360	330	152,3	111,7	90	202	160	143,4	59,5	98	29	242	211	152	450	50	STT360.000.01*

ARTIGLI STANDARD / Standard pins

ARTIGLIO STANDARD / Standard driving pin	
D	20,3
L	119
CODICE / Code	DTST00.006.32*

ARTIGLIO STANDARD per lavorazioni in senso orario e antiorario / Standard driving pin	
D	20,3
L	119
CODICE / Code	DTST00.006.33*

ARTIGLIO ZIGRINATO / Milled driving pin	
D	20,3
L	119
CODICE / Code	DTST00.006.34*

Non garantita disponibilità a magazzino / Availability in stock not guaranteed

PUNTA STANDARD / Standard point

PUNTA STANDARD / Standard point		$\varnothing D$	L	CODICE / Code
		35	147	PTST00.005.14

* Articoli con scorta minima limitata a magazzino, non garantita disponibilità immediata / Items with limited minimum stock, immediate availability not guaranteed