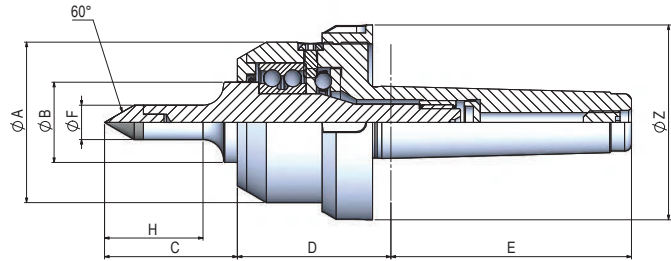


# SERIE POWER R

Contropunta con cuspidi in metallo duro per lavorazioni di **rettifica**  
 Live center with hard metal point for **grinding**

POWER R è dotata di sistema di lubrificazione e pressurizzazione per avere una maggiore durata  
 POWER R has a lubrication and pressurization system for a long lasting

Per modifiche richiedere offerta / For variations ask for offer

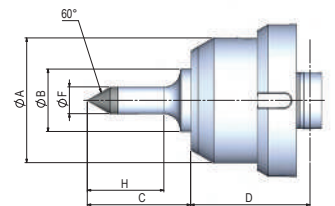


## CARATTERISTICHE GENERALI / Technical data

CONO MORSE / Morse Taper	PESO / Weight (kg)	CARICO / Load		ECCENTRICITA' / Eccentricity	MAX GIRI / 1' Max Rounds / 1' r.p.m.
		ASSIALE Axial (N)	RADIALE Radial (N)		
C.M.3	1,1	3040	1240	0,005	4500
C.M.4	1,9	3730	1540	0,005	4000
C.M.5	3,9	5100	1710	0,005	2800

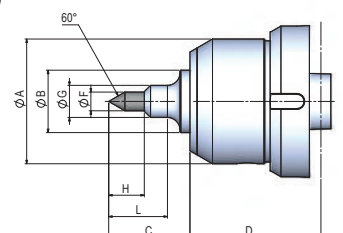
## SERIE POWER R (cuspidi MD ø15) / Series POWER R (hard metal point ø15)

CONO MORSE / Morse Taper	DIMENSIONI / Dimensions (mm)								SERIE / Series	CODICE / Code
	øA	øB	C	D	E	øF	H	øZ		
C.M.3	60	28	58	55	92	15	41	75	POWER 3/R	RPW003.000.08*
C.M.4	70	35	58	57	115	15	41	82	POWER 4/R	RPW004.000.09*
C.M.5	90	40	58	70	136	15	41	105	POWER 5/R	RPW005.000.09*



## SERIE POWER RR (cuspidi MD ø10) / Series POWER RR (hard metal point ø10)

CONO MORSE / Morse Taper	DIMENSIONI / Dimensions (mm)										SERIE / Series	CODICE / Code
	øA	øB	C	D	E	øF	øG	H	L	øZ		
C.M.3	60	28	46	55	92	10	18	20	33	75	POWER 3/RR	RPW003.000.09*
C.M.4	70	35	46	57	115	10	18	20	33	82	POWER 4/RR	RPW004.000.11*
C.M.5	90	40	46	70	136	10	18	20	33	105	POWER 5/RR	RPW005.000.10*



\* Articoli con scorta minima limitata a magazzino, non garantita disponibilità immediata / Items with limited minimum stock, immediate availability not guaranteed

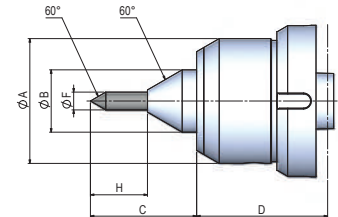
# SERIE POWER R

Contropunta con cuspidi in metallo duro per lavorazioni di **rettifica**  
 Live center with hard metal point for **grinding**

REV/5/2025

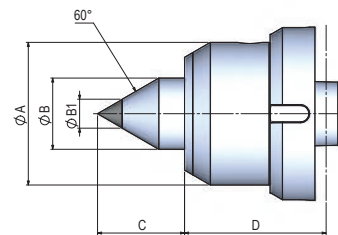
## SERIE POWER RS (cuspidi MD $\varnothing 10$ ) / Series POWER RS (hard metal point $\varnothing 10$ )

CONO MORSE / Morse Taper	DIMENSIONI / Dimensions (mm)							SERIE / Series	CODICE / Code	
	$\varnothing A$	$\varnothing B$	C	D	E	$\varnothing F$	H			
C.M.3	60	28	53	55	92	9,7	32	75	POWER 3/RS	RPW003.000.10
C.M.4	70	35	58,9	57	115	9,7	32	82	POWER 4/RS	RPW004.000.12
C.M.5	90	40	64	70	136	9,7	32	105	POWER 5/RS	RPW005.000.11



## SERIE POWER MD / Series POWER MD

CONO MORSE / Morse Taper	DIMENSIONI / Dimensions (mm)							SERIE / Series	CODICE / Code
	$\varnothing A$	$\varnothing B$	$\varnothing B1$	C	D	E	$\varnothing Z$		
C.M.3	60	28	11	34	55	92	75	POWER/MD3	RPW003.000.04*
C.M.4	70	35	14	43	57	115	82	POWER/MD4	RPW004.000.04*
C.M.5	90	40	20	50	70	136	105	POWER/MD5	RPW005.000.04*
C.M.6	130	65	25	70,14	102,5	195	160	POWER/MD6	RPW006.000.22*

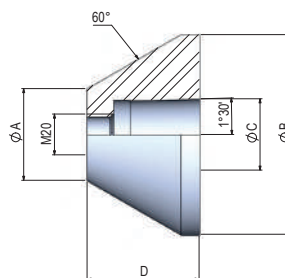


## RICAMBI E ACCESSORI / Spare parts and extra items

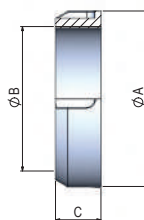
### FLANGE PER CONTROPUNTA / Flange for live center

SERIE / Series	DIMENSIONI / Dimensions (mm)				CODICE / Code
	$\varnothing A$	$\varnothing B$	$\varnothing C$	D	
FPI/45/98	45	98	35	55	RPW000.001.05
FPI/95/148	95	148	35	55	RPW000.002.05
FPI/145/198	145	198	35	55	RPW000.003.05
FPI/195/248	195	248	35	55	RPW000.004.05
FPI/245/298	245	298	35	55	RPW000.005.05

$\varnothing B$  a richiesta fino a  $\varnothing 1000$  /  
 $\varnothing B$  on request till  $\varnothing 1000$

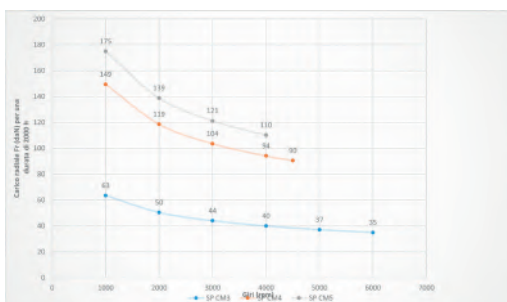


### GHIERA DI ESTRAZIONE PER SERIE POWER / SP-G / MA Ring nut for SERIES POWER / SP-G / MA

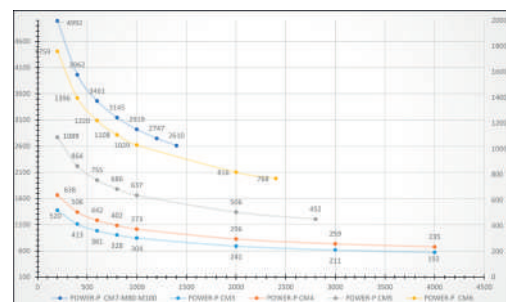


CONO MORSE / Morse Taper	DIMENSIONI / Dimensions (mm)			SERIE / Series	CODICE / Code
	$\varnothing A$	$\varnothing B$	C		
3	75	60x1,5	22	GHP 60	RPW003.005.00
4	82	70x1,5	22	GHP 70	RPW004.005.00
5	105	90x1,5	20	GHP 90	RPW005.005.00
6	140	110x1,5	23	GHP 110	RPW006.005.00

### Grafico carico assiale POWER R SERIES POWER R assial graph



### Grafico carico radiale POWER R SERIES POWER R radial graph



\* Articoli con scorta minima limitata a magazzino, non garantita disponibilità immediata / Items with limited minimum stock, immediate availability not guaranteed