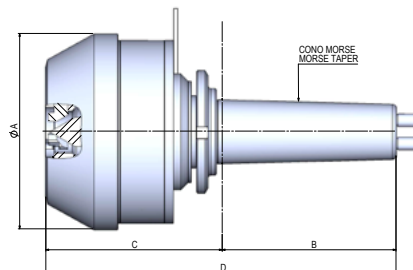


## SERIE BPM

Brida pneumatica con punta fissa e corpo rotante  
 Pneumatic clamp with dead point and rotary body



### CARATTERISTICHE GENERALI / Technical data

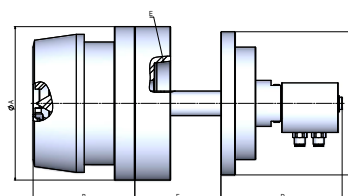
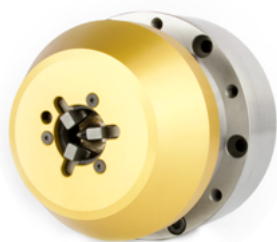
SERIE / Series	DIMENSIONI / Dimensions (mm)				VELOCITÀ / Speed	PRECISIONE / Precision	CODICE / Code
	øA	B	C	D			
<b>BPM C.M.4 *</b> BPM Morse Taper 4	135	92	123	215	1000	0,001	<b>RBP004.000.3M</b>
<b>BPM C.M.5 *</b> BPM Morse Taper 5	135	120	122	242	1000	0,001	<b>RBP005.000.3M</b>
<b>BPM C.M.4 **</b> BPM Morse Taper 4	135	92	123	215	1000	0,001	<b>RBP004.000.5M</b>
<b>BPM C.M.5 **</b> BPM Morse Taper 5	135	120	122	242	1000	0,001	<b>RBP005.000.5M</b>

Inclus onella fornitura: testina - 3 serie di morsetti - cuspide  
 Head - 3 series of clamps - cusp are included

\* Con testina 3 morsetti / With 3 clamps head  
 \*\* Con testina 5 morsetti / With 5 clamps head

## SERIE BPA

Brida pneumatica ASA con punta e corpo rotante  
 Pneumatic ASA clamp with rotary point and body



### CARATTERISTICHE GENERALI / Technical data

SERIE / Series	DIMENSIONI / Dimensions (mm)						VELOCITÀ / Speed	PRECISIONE / Precision	CODICE / Code
	øA	B	C	D	E	F			
<b>BPA ASA 5 *</b>	150	100	140	120	ASA5	ASA / L testa macchina	1000	0,002	<b>RBP00A5.000.3M</b>
<b>BPA ASA 6 *</b>	150	100	140	120	ASA6	ASA / L testa macchina	1000	0,002	<b>RBP00A6.000.3M</b>
<b>BPA ASA 8 *</b>	150	100	140	120	ASA8	ASA / L testa macchina	1000	0,002	<b>RBP00A8.000.3M</b>
<b>BPA ASA 5 **</b>	150	100	140	120	ASA5	ASA / L testa macchina	1000	0,002	<b>RBP00A5.000.5M</b>
<b>BPA ASA 6 **</b>	150	100	140	120	ASA6	ASA / L testa macchina	1000	0,002	<b>RBP00A6.000.5M</b>
<b>BPA ASA 8 **</b>	150	100	140	120	ASA8	ASA / L testa macchina	1000	0,002	<b>RBP00A8.000.5M</b>

Inclus onella fornitura: testina - 3 serie di morsetti - cuspidi  
 Head - 3 series of clamps - cusp are included

\* Con testina 3 morsetti / With 3 clamps head  
 \*\* Con testina 5 morsetti / With 5 clamps head

Ricambi per Bride BPM e BPA / Spare parts for BPM and BPA Pneumatic Clamps  
 Comunicare sempre la matricola della brida per ordinare i ricambi

TESTINA 3 MORSETTI / Head 3 Clamps ø4 / ø28 mm	
Cod.	RBP000.013.02

TESTINA 5 MORSETTI / Head 5 Clamps ø4 / ø28 mm	
Cod.	RBP000.020.01

ANELLO CONICO DI SPINTA / Conical pressure ring ø4 / ø28 mm	
Cod.	RBP000.010.01
	0

CUSPIDE / Cusp	
Cod.	RBC000.000.50

MORSETTI / Clamps

ø4 / ø12 mm	
Cod.	RBP000.030.01

oppure / or

PROLUNGATO 5 MM / Longer 5 mm ø4 / ø12 mm	
Cod.	RBP000.030.19

oppure / or

PROLUNGATO 10 MM / Longer 10 mm ø4 / ø12 mm	
Cod.	RBP000.030.20
	0

ø12 / ø20 mm	
Cod.	RBP000.030.02

oppure / or

PROLUNGATO 5 MM / Longer 5 mm ø12 / ø20 mm	
Cod.	RBP000.030.18

oppure / or

PROLUNGATO 10 MM / Longer 10 mm ø12 / ø20 mm	
Cod.	RBP000.030.21

ø20 / ø28 mm	
Cod.	RBP000.030.03
	0

TESTINA 3 MORSETTI / Head 3 Clamps ø28 / ø52 mm	
Cod.	RBP000.014.01
	0

TESTINA 5 MORSETTI / Head 5 Clamps ø28 / ø52 mm	
Cod.	RBP000.018.01

ANELLO CONICO DI SPINTA / Conical pressure ring ø28 / ø52 mm	
Cod.	RBP000.009.01

CUSPIDE / Cusp	
Cod.	RBC000.000.50

MORSETTI / Clamps

ø28 / ø36 mm	
Cod.	RBP000.030.01

oppure / or

PROLUNGATO 5 MM / Longer 5 mm ø28 / ø36 mm	
Cod.	RBP000.030.19

oppure / or

PROLUNGATO 10 MM / Longer 10 mm ø28 / ø36 mm	
Cod.	RBP000.030.20
	0

ø36 / ø44 mm	
Cod.	RBP000.030.02

oppure / or

PROLUNGATO 5 MM / Longer 5 mm ø36 / ø44 mm	
Cod.	RBP000.030.18

oppure / or

PROLUNGATO 10 MM / Longer 10 mm ø36 / ø44 mm	
Cod.	RBP000.030.21

ø44 / ø52 mm	
Cod.	RBP000.030.03